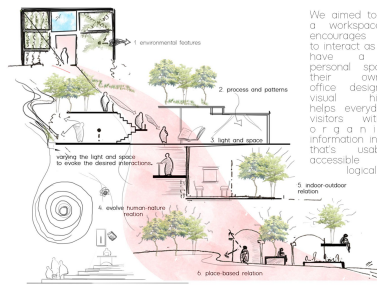


BIOPHILIA

The vision of this project is to provide interactive and barrier free environment for its user. Bangalore as a city has a very dense urban fabric which makes the natural elements subservient. The intent is to create lean-towards-nature and user-friendly approach that improves users working and learning experiences. The break free spaces accommodates the users to work in an environment that breaks monotony of constant digital screen working hours and is stress free. Informal spaces provides students with flexibility to work on their projects and also makes it possible to be more interactive with professionals.



We aimed to create a workspace that encourages people to interact as well as have a quite personal space of their own. Open office design and visual hierarchy helps everyday site visitors with an opportunity to get information in a way that's usable and logical.



user groups



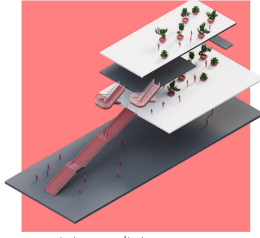
view of amphitheatre



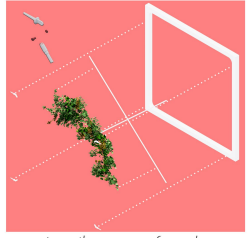
view of informal freelancers space



inside-out transition



intermediate spaces



tensile green facade



plan - small office

plan - medium office

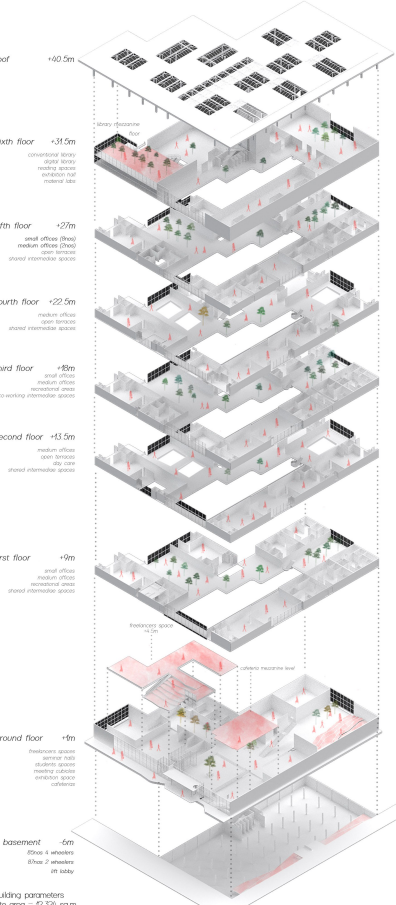


6th floor plan

2nd & 4th floor plan

2nd & 3rd floor plan

ground floor plan



exploded axonometric



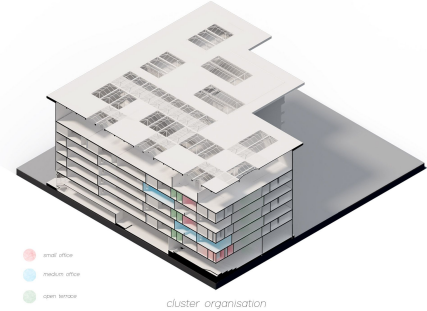
view from the entrance



small office module



medium office module



cluster organisation



building parameters

site area = 92,524 sq.m
ground coverage = 65%
percentage used = 69%