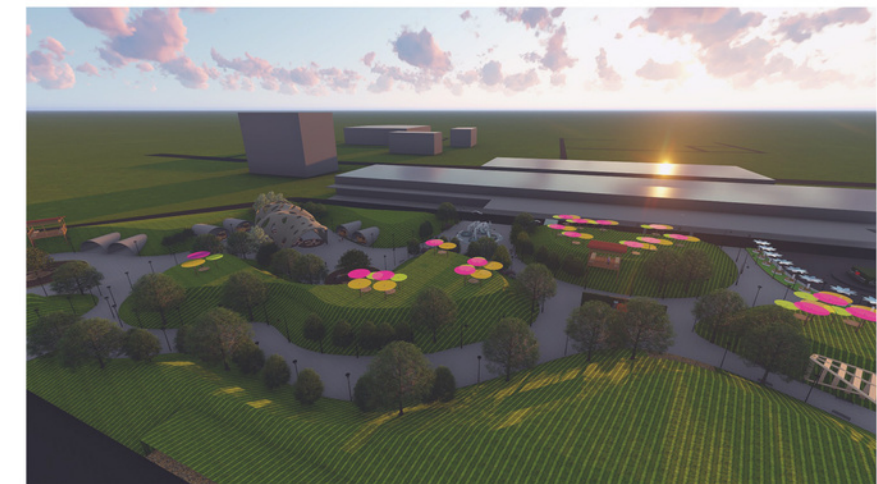
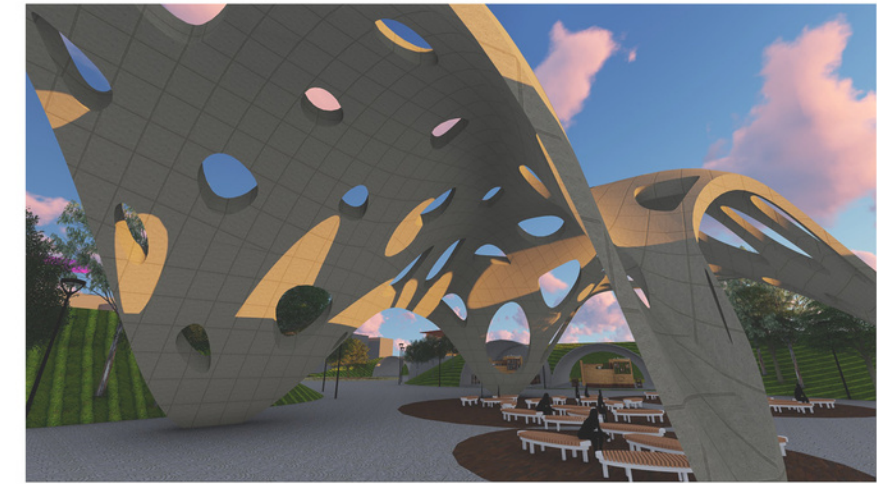




S E M - 6



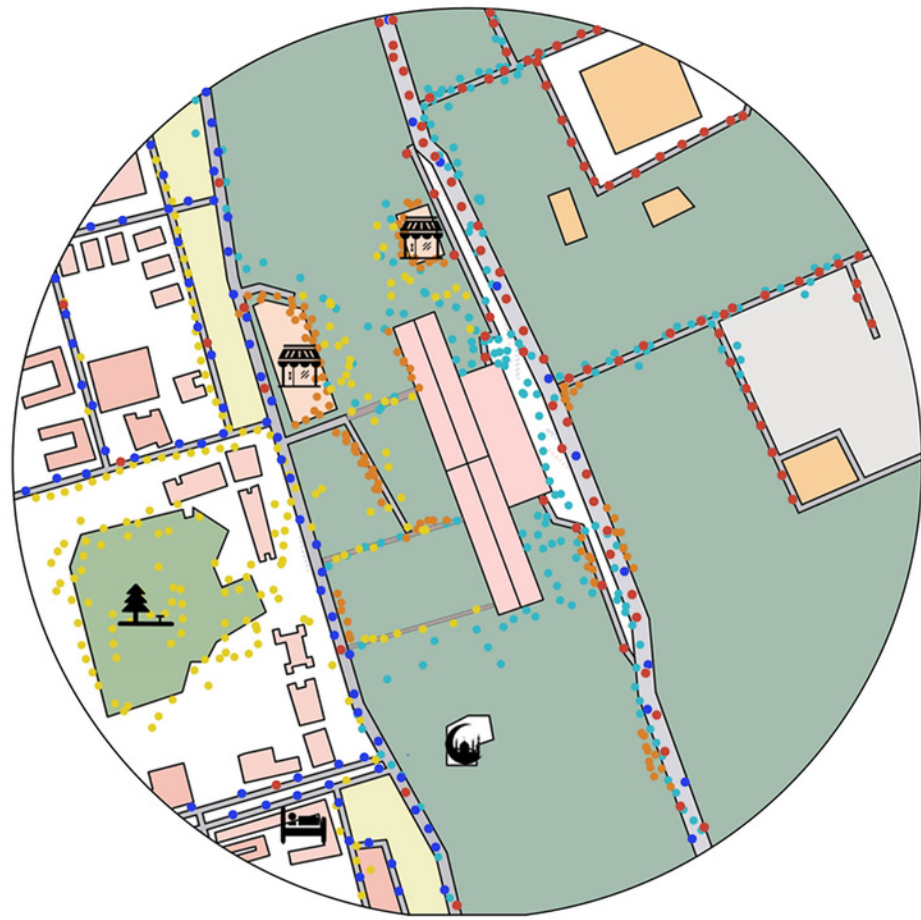
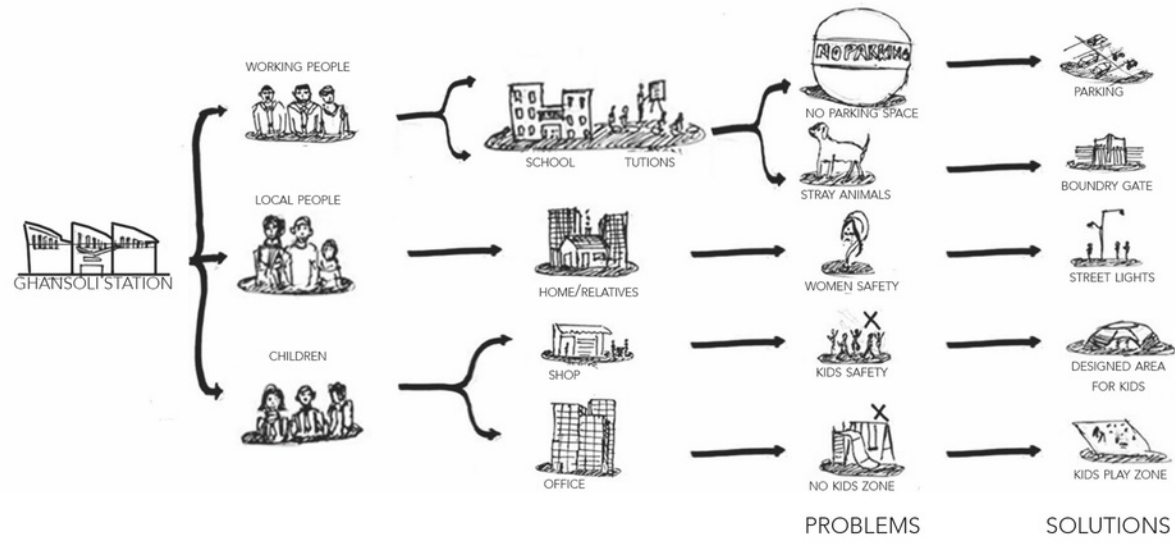
P I B L I C . P L A Z A
L A N D S C A P E . D E S I G N

A C A D E M I C S

●●●●●

T H I R D . Y E A R

●●●●●

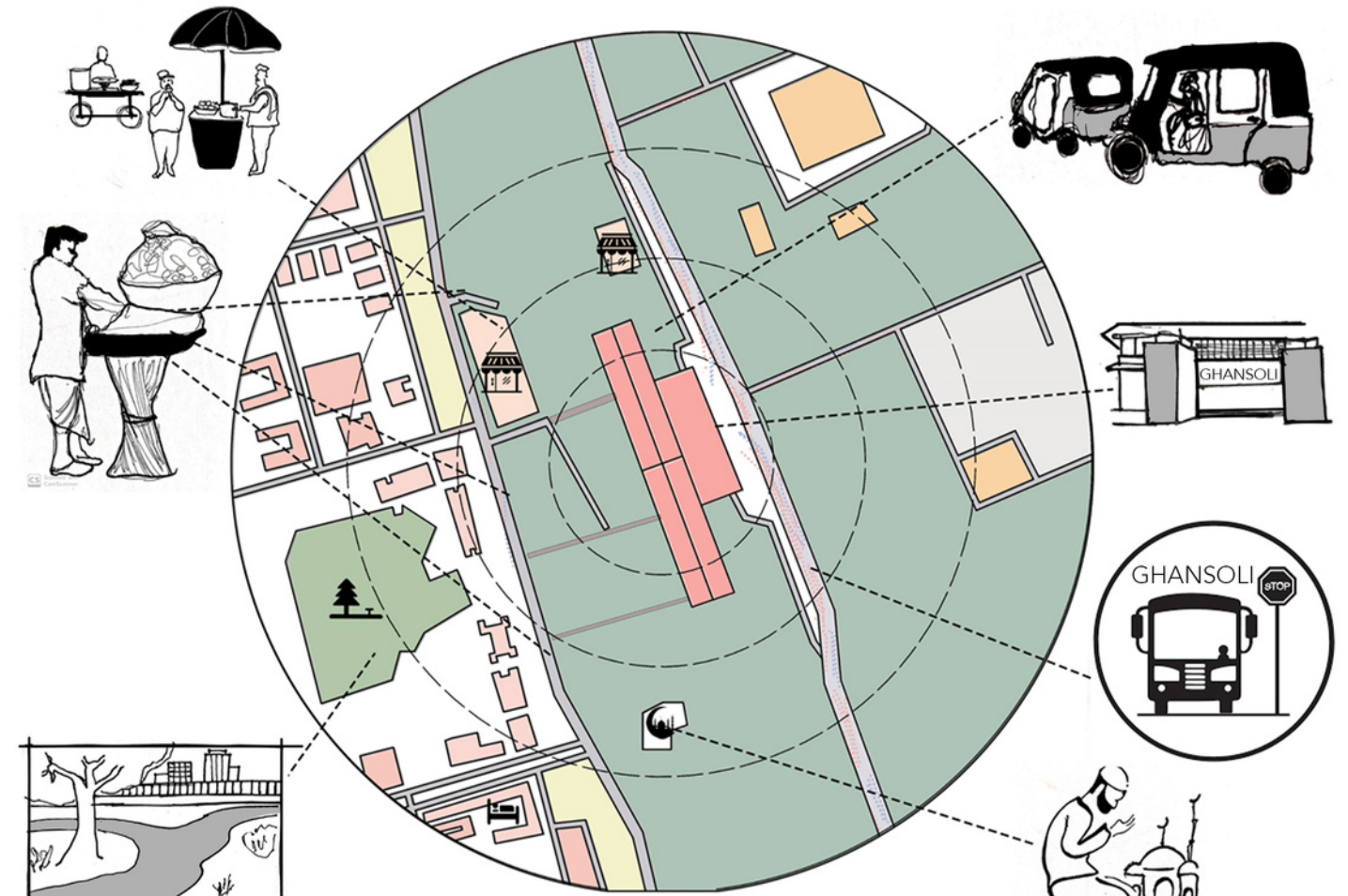
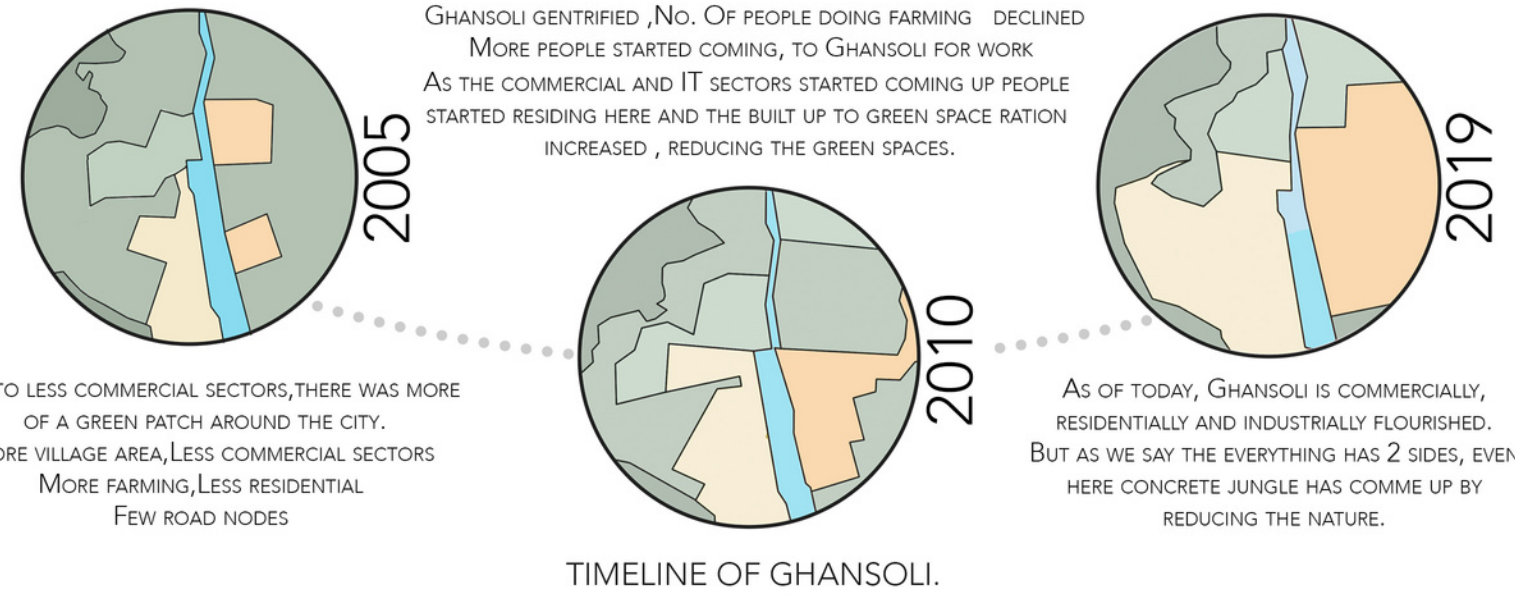


PEDESTRAIN DENSITY AT 6:00 PM

INDEX	
	Ghansoli station
	Shop
	Hotel
	Masjid
	Park
	Working people
	Shop owners
	Residences
	Working people
	Local residence and shop owners

- It is observed that many Navi Mumbai stations lack the specific provisions for a recreational space around it. Providing recreational spaces near stations can be used for multiple activities and also tackle the primary needs of people on foot. Worldwide, recreational areas are integrated with landscaping and informal commercial spaces; parks, riverside walkways, promenades, etc.

- We have used this site at Ghansoli Station, to demonstrate how this can be made possible for all age groups. Children need safety barriers; more elderly people need respite and spaces where they can walk at their own pace, also providing proper spaces where there are transport interchanges and also a variety of land uses on the site.



ACTIVITY MAPPING NEAR GHANSOLI

-GHANSOLI STATION CATERS TO DIFFERENT USERS LIKE; WORKING, RESIDENTS, KIDS, AND LOCAL VENDORS.

-THERE ARE VARIOUS ISSUES FACED BY THESE USERS; THE WORKING USER HAS AN ISSUE FOR NO PARKING SPACE, WOMEN SAFETY, AND THE VENDORS ARE TROUBLED BY STRAY ANIMALS.

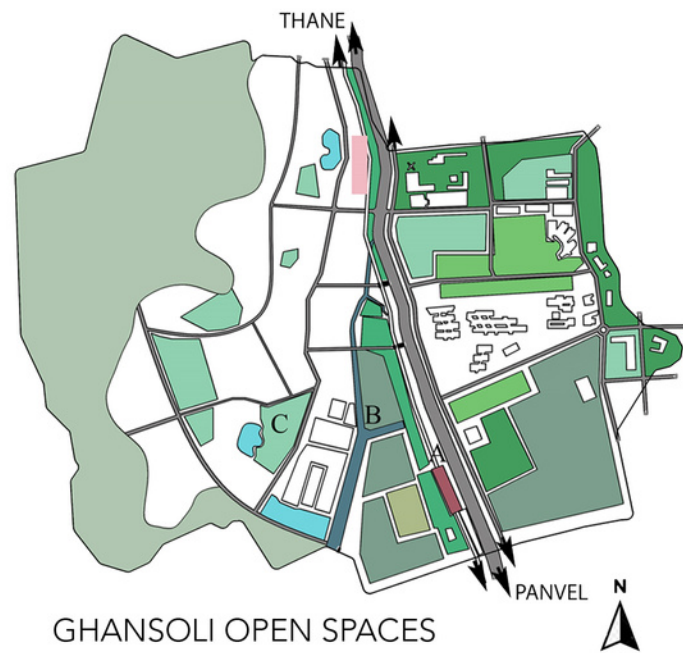
-VARIOUS STRATEGIES HAVE BEEN ADOPTED TO SOLVE THESE ISSUES.

-THE ENTIRE AREA IS DESERTED CREATING CHAOS AT ONE SPOT, WHICH IS THE STATION ENTRANCE.

-THIS DESIGN INTENDS TO MAKE THIS DEAD SPACE INCLUSIVE AND MUCH MORE ACTIVE.

- ALL OF THESE PROBLEMS ARE SOLVED BY USING BASIC STRATEGIES, FORM AND ORIENTATION.

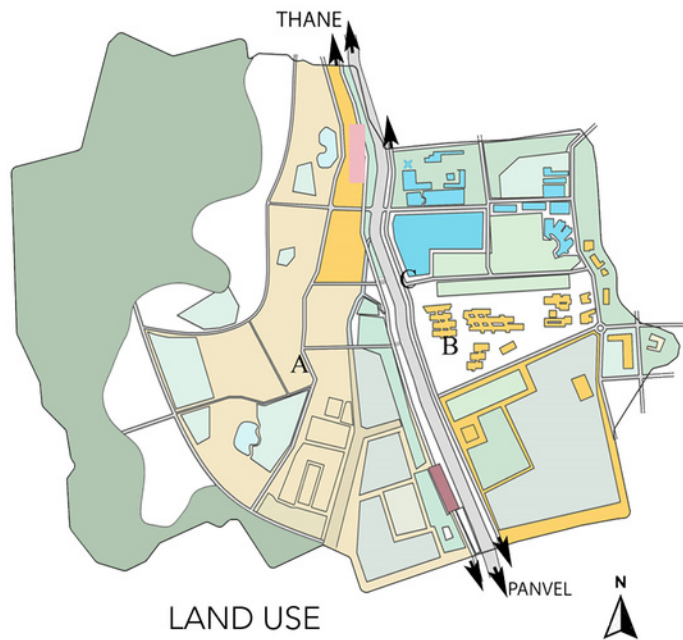




GHANSOLI OPEN SPACES

-MANGROVES COVER ALMOST 25% OF GHANSOLI.
 -RELIANCE CREATED PRIVATE PARKS TO MAINTAIN THE ECOLOGICAL BALANCE.
 -FARMING IS DONE ALONG THE SIDES OF THE RAILWAY TRACKS AND ALONG THE MANGROVES

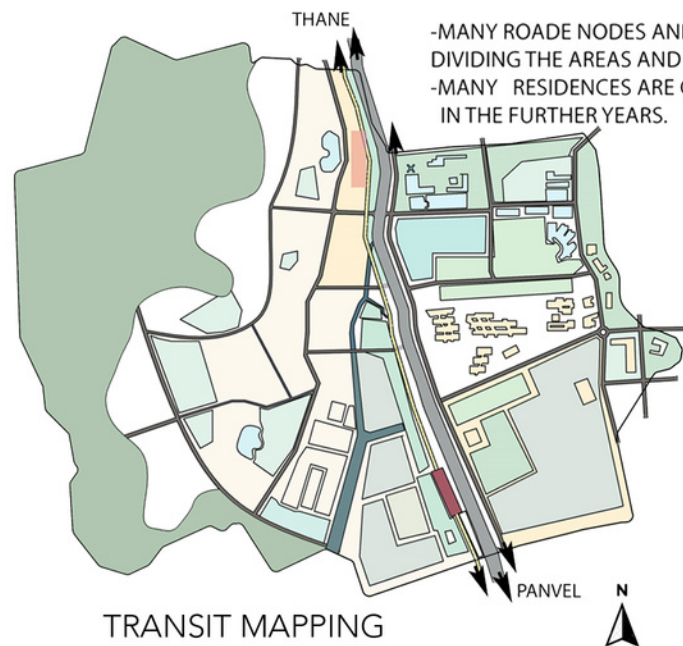
INDEX	
[Green]	Open green spaces
[Pink]	Rabale station
[Red]	Ghansoli station
[Blue]	Water bodies
[Light Green]	Mangroves
[Light Blue]	Private park
[Light Green]	Public park
[Light Green]	Barren land
[Light Green]	Open ground



LAND USE

-IN 2019, IT SECTORS, COMMERCIAL, RESIDENCES BUILT.
 -DUE TO IT SECTORS AND RELIANCE AND JIO PVT.LMT. PEOPLE FROM DIFFERENT PLACES STARTED COMING TO GHANSOLI ON A DAILY BASIS.

INDEX	
[Light Green]	Mangroves
[Pink]	Rabale station
[Red]	Ghansoli station
[Light Blue]	Residential
[Yellow]	Commercial
[Orange]	Industrial



TRANSIT MAPPING

-MANY ROADE NODES AND JUNCTIONS STARTED DIVIDING THE AREAS AND SECTORS WERE CREATED.
 -MANY RESIDENCES ARE COMING UP IN THE FURTHER YEARS.

INDEX	
[Blue]	Drainage
[Pink]	Rabale station
[Red]	Ghansoli station
[Yellow]	Railway line
[Light Green]	Mangroves
[Dark Green]	Primary road
[Light Green]	Secondary road
[Dark Green]	Main road

MASTER PLAN

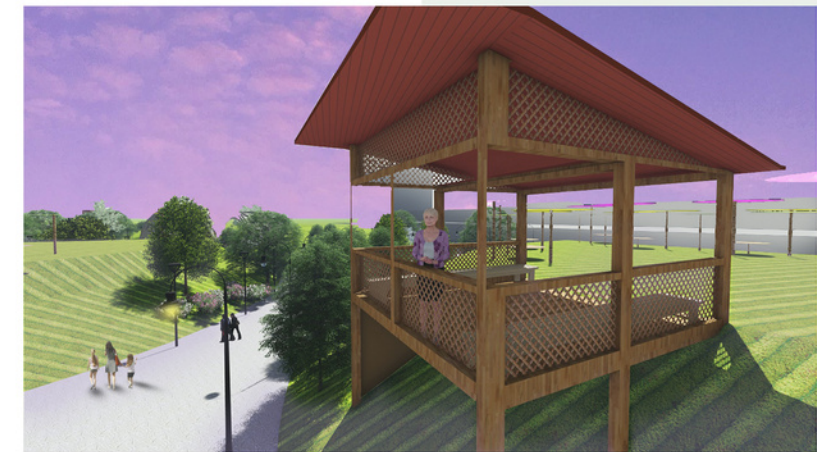


SPATIAL EXPERIENCE

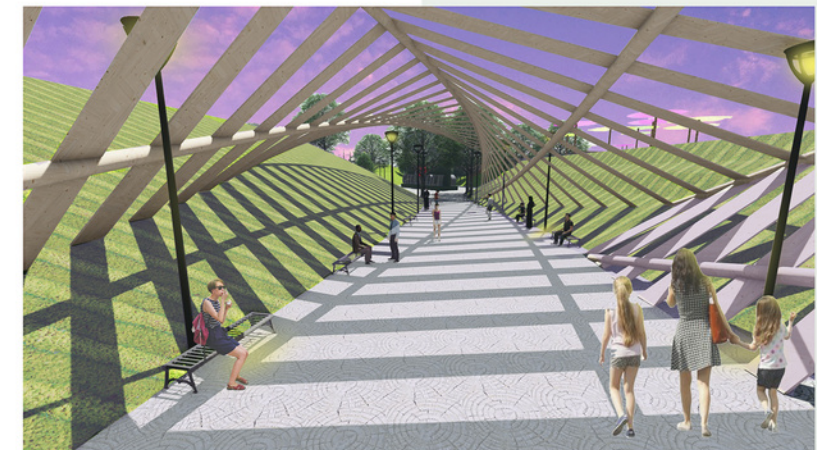
- WE HAVE USED DIFFERENT LANDSCAPE ELEMENTS TO GIVE DIFFERENT SPACIAL EXPERIENCES.

WHY SPACIAL EXPERIENCE?

- A SPATIAL EXPERIENCE IS AN EXPERIENCE RELATING TO SPACE THAT INVOLVES PEOPLE IN A CERTAIN ACTIVITY WITHIN A CONTEXT.
- IT EVOLVES FROM AN INTROSPECTIVE EXPLORATION OF THE USER'S MISSION AND PASSION; THE BUILDING PROGRAM OR FUNCTION; ITS SITE CONTEXT, AND OFTEN ITS PLACE IN HISTORY.



PERGOLA ALLOWS PEOPLE TO SEE THE VIEW OF THE ENTIRE SPACE BREAKING ALL THE VISUAL BARRIERS.



PLACING DYNAMIC 3D FORMS TRANSFORMS THE MONOTONOUS LONG TRANSITIONAL SPACE AND ADDS A NEW VISUAL EXPERIENCE TO IT.

